



## Multi LAN 350 High performance cable analyser

### General information

- Top class CAT6/ClassE LAN certification tester for testing high speed networks with a test frequency up to 350 MHz.
- MultiLAN 350 is designed in accordance with TSB67, TSB95 and TIA/EIA 568-B Level III.
- Supported test standards TIA Cat5E and 6, ISO 11801 Class D and Class E, EN 50173 Class D and E, etc.

### Main features

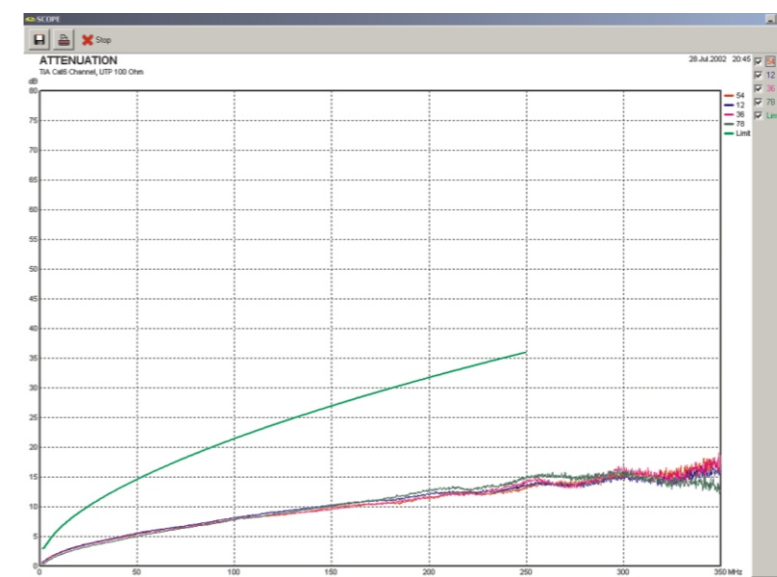
- Extensive database of Autotests for complete and quick LAN cabling verification in accordance with all leading test standards.
- Adapters for Channel and Permanent Link connection.
- High resolution TDR with TDNext function for quick determination of a distance to a faulty point along the cable.
- LANLink PC Software package for seamless report creation and documentation of test results.

### Applications

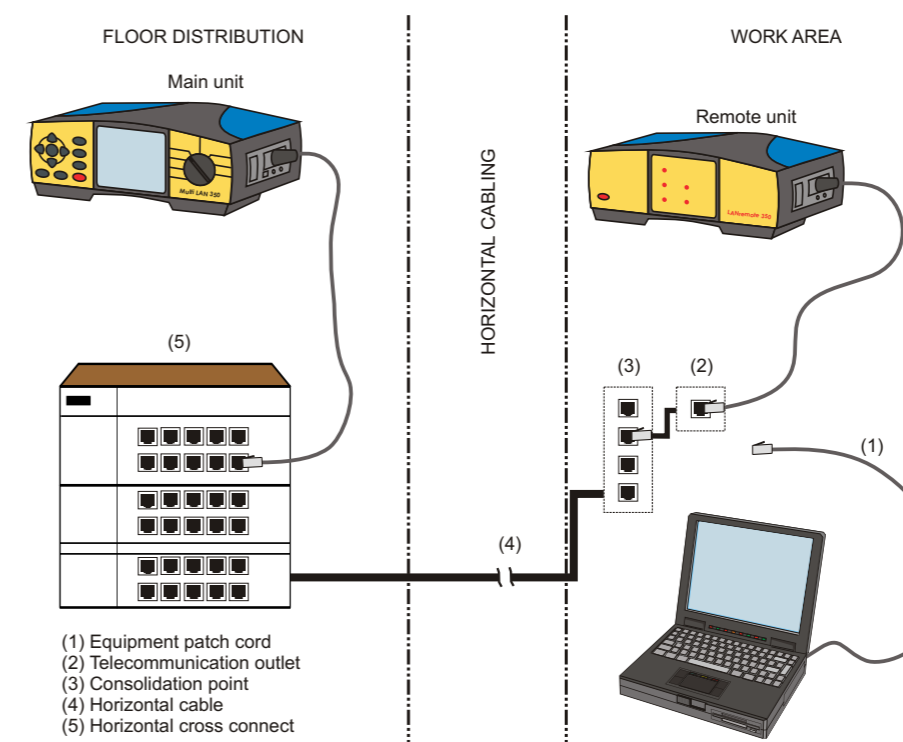
- Verification of LAN networks up to CAT6/Class E.
- Troubleshooting in IT networks.

### Benefits of using Multi LAN 350

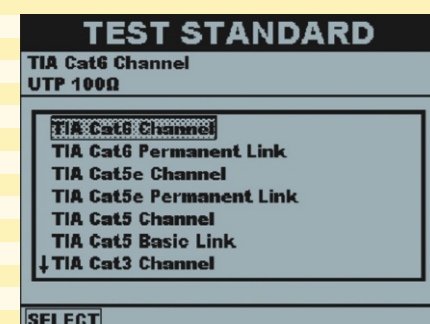
- High performance, top quality CAT6 (Class E) LAN tester for competitive price.
- Fast and seamless execution of a complete Autotest within 55 seconds.
- Complete selection of accessories helps towards better working efficiency.



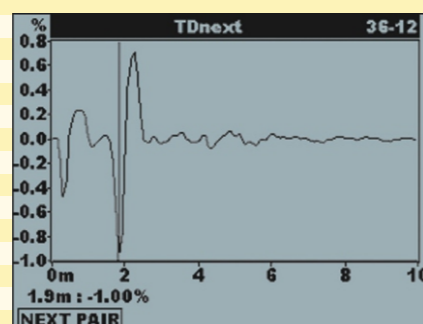
Certification of Cat 6 installations Performance tests of all installations up to 350 MHz



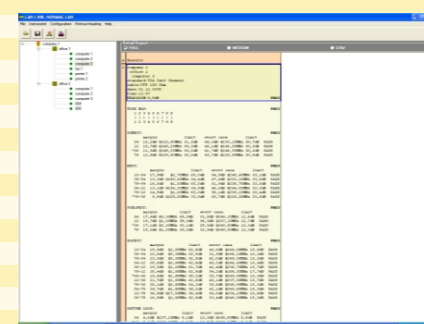
Maximal test connection for a Permanent Link



Autotests for complete and quick LAN cabling verification



TDNext function for determination of a distance to a faulty point



LANLink PC Software package for report creation

### Technical specifications

Basic Tests	Range	Accuracy	General	
NEXT, RemoteNEXT	Meets level III accuracy for:		Feature Standard	TSB 67, TSB 95, TIA/EIA 568-
PSNEXT, Remote	Baseline interface		B	Level III
PSNEXT	Permanent Link		Test Standards	TIA Cat 5E, 6
ELFEXT	Channel			ISO 11801 Class D (2002), E
PSELFEXT				EN 50173 Class D (2002), E
Attenuation	Measuring range: 0 + 250 MHz			etc.
Return Loss, Remote RL	Displayed range: 0 + 350 MHz		Cable Types	UTP, STP, ScTP, FTP
ACR, Remote ACR			Display	Graphic LCD with backlight
PSACR, Remote				320 x 240 dots
PSACR			Memory	1000 Autotests
Length	0 + 300 m	±(0.5 m + 3 %)	Connectivity	Permanent Link adapter,
Propagation Delay	0 + 500 ns	±(5 ns + 3 %)	Channel	Link adapter
Delay skew	0 + 500 ns	10 ns	Power Supply	6 x LR14 (typical oper. life 10 hours)
Impedance	35 + 180 Ω	10 %		NiMH rechargeable batteries
DC Resistance	0 + 200 Ω	±(Ω + 5 %)	External supply/charger	✓
Wire Map	Detects all connectivity faults		Dimensions (W x H x D)	265 x 110 x 185 mm
TDR, Tdnext	Resolution 1 ns (0.1m), Zoom, selectable Pulse Length		Weight (with batteries)	2.1 kg (without accessories)

### Special features

- Talk Mode: Full duplex communication over headcomputer phones
- Locator: Supports 32 cable identifiers

### Ordering information

Standard Set Part No. MI 2016 ST



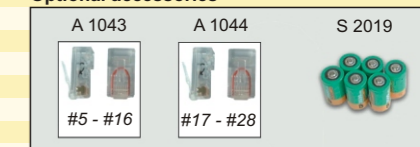
- Multi LAN 350 - Instrument
- Multi LAN 350 - Remote unit
- Permanent Link Adapter, 2 pcs
- Chanel Link Adapter, 2pcs
- Carrying bag, 2pcs
- LAN Link PC Software
- RS 232 cable
- USB cable
- Locators (#1 - #4), 4 pcs
- Attenuation Calibration modul
- Power supply/adaptor, 2 pcs
- Headphones set, 2 pcs
- NiMH battery pack, 12 pcs
- Instruction manual
- Declaration of conformity
- Product verification data

Profi Set Part No. MI 2016 PS



- Multi LAN 350 - Instrument, 2 pcs
- Permanent Link Adapter, 2 pcs
- Chanel Link Adapter, 2pcs
- Carrying bag, 2 pcs
- LAN Link PC Software
- RS 232 cable
- USB cable
- Locators (#1 - #4), 4 pcs
- Attenuation Calibration modul
- Power supply/adaptor, 2 pcs
- Headphones set, 2 pcs
- NiMH battery pack, 12 pcs
- Instruction manual
- Declaration of conformity
- Product verification data

### Optional accessories



- Part No. A 1043 - Locator set II (#5 to #16), 12 pcs
- A 1044 - Locator set III (#17 to #28), 12 pcs
- S 2019 - NiMH battery pack